

# GATOR™ UTILITY VEHICLES



**JOHN DEERE**

NOTHING RUNS LIKE A DEERE









## CONTENTS

Work. Done Well. ....	4 – 5
All-round Support .....	6 – 9
Stage V Diesel Technology .....	10 – 13

## WORK UTILITY VEHICLES

Features .....	16 – 19
Gator™ TE .....	20 – 21
Gator™ TH 6x4 .....	22 – 23
Gator™ HPX815E .....	24 – 25

## CROSS-OVER VEHICLES

Gator™ XUV855M S4 .....	28 – 31
Features XUV835M, XUV865M & XUV865R ....	32 – 35
Gator™ XUV835M .....	36 – 37
Gator™ XUV865M .....	36 – 37
Gator™ XUV865R .....	38 – 39

<b>ATTACHMENTS</b> .....	40 – 51
--------------------------	---------

<b>PRODUCT SPECIFICATIONS</b> .....	52 – 55
-------------------------------------	---------







# WORK DONE WELL.

Every day, you give the job your best. As a true professional and craftsman, you go the extra mile to get the best results you can. Not because the client expects it, or your company, but because you'd never settle for anything less yourself.

That same mentality explains why you appreciate having a strong and able partner by your side to help shoulder the load. Like any good worker, you know from experience that 'quality in' and 'quality out' really do go hand-in-hand.

If that sounds like you, you're in good company with John Deere. We take as much pride in the quality of our utility vehicles as the people who use them all over the world. Professionals like you, who understand the meaning of work done well.





# ALL-ROUND SUPPORT

From advice and sales to maintenance and repairs, your local John Deere partner has everything you need to keep your investment running like clockwork. Find your nearest John Deere dealer today at [dealerlocator.deere.com](https://dealerlocator.deere.com)







## A GLOBAL COMMUNITY

The people at your local John Deere dealership are always there for you – with personal service you can rely on. As part of the John Deere community, they combine their own individual style with all the benefits of a strong global company.



## TAILOR-MADE FINANCING

John Deere Financial has been helping customers grow their businesses for more than 150 years. Based on our unique understanding of your market and the challenges you face, we offer competitive, tailor-made financing for the machines you need to raise your game.

From hire purchase to leasing and rentals, your local John Deere dealer can help you choose the options that suit your business best. Why not drop in for a chat?





# POWERGARD™

STATUS: PROTECTED

When you protect your equipment with a PowerGard™ Protection plan\*, your business has the steady machine uptime and nonstop peak performance it needs to thrive.



PowerGard™ agreements protect you against unexpected repair costs and keep your maintenance on track with genuine parts. Three fixed rate packages provide increasingly comprehensive levels of cover to keep your machine running at peak performance with steady uptime.

## POWERGARD™ PROTECTION PLAN

Preventative maintenance work – it's essential for keeping equipment in good working order based on factory recommended intervals.\*

## POWERGARD™ PROTECTION

Base level of protection that covers unusual events that can lead to costly repairs, and also covers the main drive train components.

## POWERGARD™ PROTECTION PLUS

The ultimate in protection – the total peace of mind package that covers all components included in PowerGard™ Protection, plus electrical, cooling, hydraulics and more.

## FINANCING

Include your PowerGard™ Protection agreements into your finance offer and benefit from competitive rates, with flexible payments.\*\*

\* At participating dealers only. Requires a maintenance plan.

\*\* At participating dealers only.





## FACTS, NOT GUESSWORK

Ever wished you could X-ray your machine to see how it's doing inside? Expert Check is the next best thing: a thorough diagnosis of all key components (including sensors, electronics and software) using up-to-the-minute, field-based checklists and tools that are exclusive to John Deere dealers. The result is a detailed report stating exactly where your machine stands, as well as what needs doing and when.

## CLEAR PRICES

Based on this report, you can tell us exactly what work you want done. With transparent pricing and all-in packages for parts and labour, Expert Check takes the guesswork out of repairs and maintenance, too.



## ORIGINAL JOHN DEERE PARTS

Even John Deere machines need repairs eventually. When the day comes, our dealers pull out all the stops to maximise uptime and get them back on the job. With a state-of-the-art workshop and a fully-trained technical team on hand, they can provide professional support backed by the latest updates coming direct from the factory. For smaller repairs you'd rather do yourself, they can supply everything you need overnight – even for older models.





# STAGE V DIESEL TECHNOLOGY

Environmental protection standards are getting stricter. To protect the environment and your investment the diesel engines in our GATOR™ Utility Vehicles comply in full with the latest Stage V emission standards.

## **STAGE V REGULATION (EU) 2016/1628 – NON-ROAD MOBILE EQUIPMENT APPLICATION**

The new European emissions standards, commonly referred to as “EU Stage V”, will apply to engines installed in off-road mobile equipment, as stipulated according to engine output. These EU Stage V standards will also be applicable to diesel engines with an output range of less than 19 kW which were previously not targeted by the existing standards. For models with an output of 19 kW and more, the permitted values for NOx and PM (Particulate Matter) emissions are one level stricter than previous standards. In addition, new PN (Particle Number) standards have also been set making the new emissions standards generally the strictest in the world.

**With this regulation in place, all diesel powered turf equipment is impacted!**







## WHY ARE PM AND NO<sub>x</sub> CRITICAL COMPONENTS

	PM	NO <sub>x</sub>
<b>ALSO KNOWN AS</b>	Particulate Matter, airborne particles such as soot, smoke	Nitrogen Oxide (NO), Nitrogen Dioxide (NO <sub>2</sub> )
<b>WHAT IS IT?</b>	Unburned Hydrocarbons (fuel)	Molecule that is created in the combustion process
<b>WHAT CAUSES IT?</b>	<ul style="list-style-type: none"> <li>- Low combustion temperature</li> <li>- Low oxygen level during combustion</li> <li>- Low combustion pressure</li> </ul>	<ul style="list-style-type: none"> <li>- High combustion temperature</li> <li>- High oxygen level during combustion</li> <li>- High combustion pressure</li> </ul>
<b>WHY IS IT A REGULATED EMISSION</b>	<ul style="list-style-type: none"> <li>- Soot particles are very small and get trapped in the lungs</li> <li>- Associated as a cause of cancer</li> </ul>	NO <sub>x</sub> molecules attach to other elements in the atmosphere and produces smog
<b>ALSO REGULATED IN ENGINE ABOVE 19 KW</b>	PN – Particle Number. Regulates the number of particulates contained within a mass unit of emissions; separate from the existing PM	

## REGULATIONS FOR DIESEL ENGINES IN THE TURF RANGE

Regulation diversify by power category

ENGINE POWER	ENGINE POWER	CO	NMHC+NO <sub>x</sub>	PM	PN
kW	hp	g/kWh (g/hph)	g/kWh (g/hph)	g/kWh (g/hph)	#/kWh
0 < P < 8	< 10.7	8.00 (6.00)	≤ 7.50 (5.60)	0.40 (0.30)	
8 ≤ P < 19	10.7 ≤ P < 25.5	6.60 (4.90)	≤ 7.50 (5.60)	0.40 (0.30)	
19 ≤ P < 37	25.5 ≤ P < 50	5.00 (3.70)	≤ 4.70 (3.50)	0.015 (0.011)	1x10 <sup>12</sup>
37 ≤ P < 56	50 ≤ P < 75.1	5.00 (3.70)	≤ 4.70 (3.50)	0.015 (0.011)	1x10 <sup>12</sup>

Detailed information about John Deere turf equipment can be obtained from your John Deere Dealer.



# ENGINE TECHNOLOGY



## THE TECHNICAL CHALLENGE

### To reduce PM, it needs:

- increase in oxygen level
- high combustion temperature
- increase combustion pressure
- advance engine timing

### To reduce NOx:

- lower oxygen level
- lower combustion temperature
- lower combustion pressure
- retard engine timing

This trade-off requires modern engine technology and above 19 kW also after treatment components.

For John Deere Turf equipment there are two power categories, that require different engine technology:

## CATEGORY BETWEEN 8 AND 19 KW

Our modern engines meet the newly imposed emissions standards for the under 19 kW range with no after-treatment devices needed.

## CATEGORY BETWEEN 19 AND 56 KW

- Direct injection to create clean-burning power
- Common rail system to allow fine-tuned electronic control of fuel injection
- Fully-electronic control to provide total intelligent engine control
- Cooled EGR (Exhaust Gas Recirculation) to reduce nitrogen oxides (NOx)
- Diesel Particulate Filter (DPF) to catch particulate matter (PM) in the exhaust gas
- Diesel Oxidation Catalyst (DOC) to reduce amount of CO (carbon monoxide)
- Fuel cooler for better fuel efficiency





## WHY CHOOSE A JOHN DEERE GATOR™?



### ENVIRONMENTAL ADVANTAGE

It's not just about meeting regulations. By running equipment with modern engine technology, you help to protect the environment too.



### INVESTMENT PROTECTION

Investing in the latest technology protects the residual value of your equipment long term.



### BUSINESS ADVANTAGE

Safeguard your long-term business with clients who require compliance with the latest environmental standards.



### OPTIMISED SOLUTION

Drawing on our non-road machine experience, we meet emissions requirements while maximising engine performance and reliability.



### FIELD PROVEN

Like all John Deere equipment, we test the new Stage V compliant engines comprehensively and thoroughly before release.



### FULLY SUPPORTED

Together with our dealers, distributors and channel partners, we support you with this new technology.



### FUEL EFFICIENT

Our Stage V compliant equipment does not affect fuel efficiency.



### PERFORMANCE

These modern engines do not reduce machine performance in the field.





# WORK UTILITY VEHICLES

THE VERSATILE WORKHORSE AT YOUR SIDE





Looking for a capable partner that treads softly,  
yet works as hard as you do? Put a Gator™ on your  
team – and relax.





# FEATURES

## WORK UTILITY VEHICLES

Added for your convenience. These Gator™ work utility vehicles are built tough and will assist you in your daily tasks. They work hard and come equipped with a host of features designed to help you get the job done as quickly and easily as possible.



### EFFECTIVE BRAKES

Every brake system is precisely matched to the vehicle load capacity. If you start with it in the back you can stop with it in the back.



### INTUITIVE CONTROLS

Even if you've never driven a Gator™ before, you'll feel at home right away. All the controls are simple, clear . . . and right where you need them.

### MORE OPERATING CONVENIENCE ON BOARD

Once you get behind the wheel of your work utility vehicle, you'll find even more convenient operating features and storage options on board. All models feature a park brake indicator light, hour meter, and tank-mounted fuel gauge as standard equipment. There's a glove box in the dash, plus additional storage and a hand-operated traction assist (differential lock) conveniently located between the seats. The Gator™ TH 6x4 comes with a traction assist indicator light, too.







## HIGH FLOTATION TYRES

All T-Series Gator™ Utility Vehicles come with top quality high flotation tyres that let you work hard without damaging the turf. With their special tread pattern, they're equally suitable on hard or soft surfaces.





## SPACIOUS AND DURABLE DELUXE CARGO BOX

The deluxe cargo box consists of a 15% glass-filled polypropylene composite material that eliminates rust, dents and reduces noise. The cargo box floor and load guard (front panel) are made of steel.



**Deluxe Cargo Box Tilt:** With its integrated handle design and gas assist, the deluxe cargo box is now easier to latch, unlatch, raise and lower. A prop rod is provided to hold the box in the upright position and limit its pivot travel.

**Integrated Tie-Down Points:** The deluxe cargo box offers several tie-down points for increased versatility: four corners inside the cargo box bed, four points on the load guard directly behind the operator station, tie-down bars on either side of the cargo box as well as six points on the underside of the cargo box frame.



**Deluxe Cargo Box Tailgate:** The improved tailgate allows for easy loading and unloading, features truck-like performance and can be operated with one hand. It can be opened or removed for easier clean-out or to accommodate longer items. The standard installed lanyards can also be removed to lower the tailgate to 150 degrees.



## FROM CARGO BOX TO FLAT BED

The improved deluxe cargo box offers even more versatility. When you need to load larger cargo, it easily converts to a convenient flat bed. This allows you to adapt your vehicle's loading space according to your needs, while the flat bed's load height enables easy loading and unloading.

Caution: Carrying extra long cargo that extends beyond the box can adversely affect your vehicle's overall stability.





***“MY GATOR™ IS  
MY BABY! IT’S  
COMFORTABLE  
AND SAFE, AND  
IT TAKES ME  
EVERYWHERE  
I NEED TO GO.”***

NUNO FAVINHA

**WORK**  
DONE WELL.



Nuno Favinha is the Irrigation Manager for three prestigious courses at Quinta do Lago, Portugal. The climate is dry, the challenges are complex and there's no room for failure. "We have 120 ha of grass, six pump stations and miles of pipes and wiring so I'm always on the go." Nuno's Gator™ takes him everywhere, and he clearly loves it to bits. "Some day, when I have my farm, I want a Gator™ of my own." ■



# GATOR™ TE

A ZERO-EMISSIONS GATOR™ THAT JUST KEEPS GOING

Golf courses, work premises, enclosed spaces . . . When quiet operation and zero emissions are the order of the day, the Gator™ TE really delivers. Thanks to an impressive combination of driving and utility features, you can go electric without compromising on power or functionality.



## WHISPER-QUIET ELECTRIC POWER

The Gator™ TE is equipped with a motor-powered 48-V electrical system for faster acceleration and better uphill performance. Dynamic braking and anti-rollback offer additional security when you take your foot off the accelerator, preventing the vehicle from freewheeling when stopped on a gradient. Overspeed control to approximately 13 km/h (8 mph) and the electronic brake ensure your speed remains constant without the loss of torque, even on a downhill incline or in reverse. With its eight high-capacity batteries, the Gator™ TE can work hard for 7 – 8 hours between charges – all with zero emissions and practically no noise.

Energy is transformed back into the batteries when the vehicle exceeds the set maximum speed or when dynamic braking is engaged. That's an estimated 3 – 5% of regenerative energy for a day of work.







**Hard Worker:** Don't be deceived by the quiet exterior of the Gator™ TE Utility Vehicle. With solid, one-piece forged axles, a cast aluminium rear axle housing and a deluxe cargo box, it's built for hard work in all conditions.

## INCREASED RUN-TIME

Every unit comes with an Underwriters Laboratories Inc. (UL) approved on-board charger that enables you to charge your vehicle from anywhere. Additional safety features prevent overcharging or driving while connected to the charger. Its advanced temperature sensor technology improves the information flow coming in and out of the charger and allows the batteries to charge more fully. This can increase run time by up to 75%, depending on your usage.



## TE

Electric Engine
Speed: 24 km/h
Rear Suspension: Two High-Flotation Tyres, Low Pressure Tyres (Solid Axle)
Towing Capacity: 273 kg
Cargo Capacity: 227 kg

- Super-Quiet Electric Operation
- Zero Emissions



# GATOR™ TH 6X4

TOW MORE THAN YOU THOUGHT

With six wheels, a low centre of gravity and power to spare, the Gator™ TH 6x4 makes light work of heavy loads. It's our strongest workhorse, can transport up to 508 kg and is prepared to help you power through.



## FULL POWER AHEAD

The powerful yet economical 854 cc, three-cylinder, liquid-cooled, four-cycle diesel engine makes the Gator™ TH 6x4 a speedy mover even when the going gets tough. The engine is rated 13.6 kW (18.5 hp) at 3400 rpm using standard ECE-R24. Its overhead valve was designed for greater efficiency and fuel economy. It contains a dry replaceable single-element air cleaner with remote intake as well as a spark-arresting muffler. Indirect injection diesel with glow plugs ensure fast starts in cold temperatures, while its dual radiator system adds cooling capacity.



## GOLF PRO

With six high-flotation wheels, the Gator™ TH 6x4 travels lightly over your valuable turf.







## HEAVYWEIGHT CHAMPION

With a total towing capacity of 726 kg (including passengers), the Gator™ TH 6x4 is the strongest workhorse in the T Series family. See page 52–53.



## TH 6X4

Diesel Engine
Displacement: 854 cc
Speed: 32 km/h
4-Wheel Drive
Rear Suspension: Two High-Flotation Tyres, Low Pressure Tyres (Solid Axle)
Towing Capacity: 726 kg
Cargo Capacity: 508 kg

– Comfortable Low Load Height



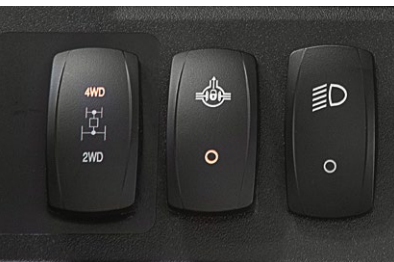
# GATOR™ HPX815E

## READY FOR WORK

Love a challenge? So does the Gator™ HPX815E. Even when fully loaded, this utility vehicle is built to clear all types of ground. Its 635 kg payload capacity, 4-wheel drive and semi-independent suspension will help you go where others can't.



**See More At A Glance:** The updated digital instrument cluster shows more information in a clearer, more user-friendly way. Highlights include a Current Gear Selection indicator, an RPM readout, and warning signals for speed, fuel level and MFWD / Diff lock status.

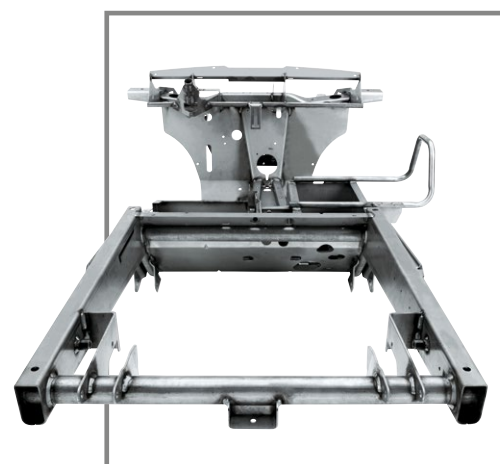


**More Control & Comfort:** The updated mechanical 4-wheel drive (MFWD) system engages electronically and features Active Hill Descent for safer, more intuitive operation. To engage the MFWD or Diff lock, just turn the electronic switch on the dash – and enjoy the fast response!



### EASY TO PARK & SMOOTHER SHIFTING

The park position is now part of the transmission. This means you can use the redesigned gearshift to park, which is far more convenient. The gearshift is designed for smooth, accurate selection, particularly when transferring between forward and reverse.







## PILE IT ON

Heavy loads? No problem, thanks to a cargo capacity of 454 kg.



## HPX815E

Diesel Engine
Displacement: 854 cc
Speed: 40 km/h
4-Wheel Drive
Rear Suspension: Coil-Over-Shock
Towing Capacity: 590 kg
Cargo Capacity: 454 kg

- High-Strength Hydro-Formed Steel Frame
- Standard Deluxe ROPS Canopy
- Road Homologation\*

\* Homologation type may vary by country.  
Please refer to your dealer.



## HIGH-STRENGTH HYDRO-FORMED STEEL FRAME

Our hydro-formed frames have fewer welded or bolted joints for maximum durability, plus high tolerances for twisting and heavy loads.



# CROSS-OVER VEHICLES

A BREED APART





Experience the ultimate freedom in a Gator™ XUV! Off road or on, these working vehicles are a dream to drive – and fully equipped for safe, surefooted productivity.





# GATOR™ XUV855M S4

## ROOM FOR FOUR PLUS PLENTY MORE

Need room for more? When you're expecting company or your job demands added manpower, the diesel-powered XUV855M S4 is the way to go. It seats four people comfortably with enough space for all your tools and equipment. Even when fully loaded, its power and acceleration will be sure to impress.



### A RIDE TO REMEMBER

The XUV855M S4 is powered by an 854 cc (0.854 L), three-cylinder, liquid-cooled, four-cycle diesel engine that delivers superb starting, idling and throttle response during operation. Minimal noise vibration and harshness (NVH) along with hydraulic disc brakes and power steering allow you to operate this surprisingly nimble four-seater smoothly.



### EASY TO PARK & SMOOTHER SHIFTING

The Park position is now part of the transmission. This means you can use the redesigned gearshift to park, which is far more convenient. The gearshift is designed for smooth, accurate selection, particularly when transferring between forward and reverse.







## PLENTY OF SPACE FOR FOUR

Four seats. True, on demand 4-wheel drive and fully independent suspension for a smooth, comfortable ride.



## FULL-SIZE CARGO BOX

Even though the S4 version seats four, it has a full-size cargo box. The box consists of a noise-reducing, 15% glass-filled polypropylene composite material that eliminates rust and dents and can easily be converted into a flat bed. This configuration is ideal for loading larger cargo.



## CONVERTIBLE REAR BENCH

The rear bench folds down in seconds when you need to carry long items or store your things.





## SMOOTH & RESPONSIVE

The updated power steering module greatly improves driver feedback and is built for years of smooth, reliable productivity. Thanks to the intelligent design, you can also install AutoTrac™ at a later date without cutting out the dash.



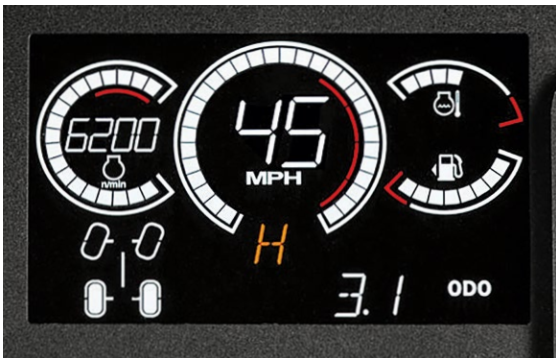
## PERFORMANCE-ENHANCING SUSPENSION & TRACTION

Take rugged terrain and gradients in your stride with these high-performance, 4-wheel drive utility vehicles. Dual A-arm front and rear suspension features 203.2 mm (8 in) of travel to provide ample compression and wheel extension, making for a smooth ride and excellent hauling characteristics. The entire suspension system has been optimised to handle all payloads, from zero to maximum, without compromising ride quality or vehicle stability. An additional solid antiroll bar with fully rubber-isolated connecting links and pivots limits body roll and enables quiet operation. This keeps all four wheels on the ground for optimal traction and vehicle control.



MORE CONTROL & COMFORT

The updated mechanical 4-wheel drive (MFWD) system engages electronically and features Active Hill Descent for safer, more intuitive operation. To engage the MFWD or diff lock, just turn the electronic switch on the dash – and enjoy the fast response!



SEE MORE AT A GLANCE

The updated digital instrument cluster shows more information in a clearer, more user-friendly way. Highlights include a Current Gear Selection indicator, an RPM readout, and warning signals for speed, fuel level and MFWD / Diff lock status.



ALL-OUT DIESEL POWER

The XUV855M S4 cross-over vehicles derive their power from an advanced diesel engine that provides several operational benefits, including superb starting, idling and throttle response. Rated 16.1 kW (21.9 hp) at 3400 rpm using standard ECE-R24, the engine operates quietly across the entire rpm range.



XUV855M S4

Diesel Engine
Displacement: 854 cc
Speed: 51km/h
4-Wheel Drive
Fully Independent Suspension
Power Steering: Standard
Towing Capacity: 680 kg
Cargo Capacity: 454 kg

– Road Homologation\*

\* Homologation type may vary by country.  
Please refer to your dealer.



# FEATURES

## XUV835M, XUV865M & XUV865R – CROSS-OVER VEHICLES

Once you experience the XUV835M, XUV865M and XUV865R cross-over utility vehicles, you won't look any further. These top-of-the-line Gators tick all the boxes in terms of power, capacity and car-style comfort. Not to mention their slick design.



### RIDE IN STYLE

Whether it is a completely open operator station or a factory-installed cab, the interior has been designed with comfort and ergonomics in mind.



### OPEN OR CLOSED?

Choose either an open cab with nets, or the fully-enclosed cab with poly doors for maximum protection and minimum noise.







### SPACIOUS CAB

The cab on these models raises the bar in terms of comfort, space and storage.



### POWERFUL HVAC SYSTEM

With four adjustable dash vents and three fan speeds, the efficient heating, ventilation and air conditioning (HVAC) system keeps you at the perfect temperature year-round. Automotive-style controls in the centre of the dash are easy and convenient use by the operator or passengers (Standard on the XUV865R, optional for XUV835M and XUV865M).







## STAND OUT OR BLEND IN

The Gator™ XUV835M and XUV865M models come in three different colourways. Have your say and choose between the John Deere Green & Yellow, Olive & Black or woodland Camouflage. It's your call.



## MORE CONTROL & COMFORT

The updated mechanical 4-wheel drive (MFWD) system engages electronically and features Active Hill Descent for safer, more intuitive operation. To engage the MFWD or diff lock, just turn the electronic switch on the dash – and enjoy the fast response!



## SEE MORE AT A GLANCE

The updated digital instrument cluster shows more information in a clearer, more user-friendly way. Highlights include a Current Gear Selection indicator, an RPM readout, and warning signals for speed, fuel level and MFWD / Diff lock status.



## EASY TO PARK & SMOOTHER SHIFTING

The Park position is now part of the transmission. This means you can use the redesigned gearshift to park, which is far more convenient. The gearshift is designed for smooth, accurate selection, particularly when transferring between forward and reverse.





## SMOOTH & RESPONSIVE

The updated power steering module greatly improves driver feedback and is built for years of smooth, reliable productivity. Thanks to the intelligent design, you can also install AutoTrac™ at a later date without cutting out the dash.



## TAKE IT AWAY

Heavy or bulky loads? No problem – these models have ample towing and cargo capacity, plus roadholding and brakes to match.

With an optional Power Lift, your Gator™ doubles as a dump truck.



## WIRED FOR ACTION

The cab comes with all cables pre-installed, so hooking up a winch is easy.



## GO HIGHER

With true on-demand 4-wheel drive and even more ground clearance, both models go where others can't when conditions are tricky.



# GATOR™ XUV835M

# GATOR™ XUV865M

THE ULTIMATE IN COMFORT AND PERFORMANCE

Whatever the challenge, the Gator™ XUV835M and the Gator™ XUV865M are ready to take it on. Be it comfort or performance, these two vehicles are all about setting new standards.



## CHOOSE YOUR FUEL

Both models offer car-style comfort and controls. Choose between a petrol powered XUV835M or the diesel powered XUV865M.



**More Manpower:** In need of an extra pair of hands? Simply adjust the driver seat and make room for more. The Gator™ XUV835M & Gator™ XUV865M cab can comfortably seat up to three passengers, when not on public roads.



**Additional Storage:** You can never have enough storage space. To make sure your equipment and personal items are safely stored away and out of sight, just tip the passenger bench forward and use the extra storage space underneath.





**Easy Access:** When navigating narrow spaces, you will find these Gators are astonishingly compact and offer all-round visibility.



## XUV835M

Petrol Engine
Displacement: 812 cc
Speed: 60 km/h
4-Wheel Drive
Fully Independent Suspension
Power Steering: Standard
Towing Capacity: 900 kg
Cargo Capacity: 454 kg

- Optional HVAC (heating and air conditioning)
- Road Homologation\*

\* Homologation type may vary by country.  
Please refer to your dealer.



## XUV865M

Diesel Engine
Displacement: 854 cc
Speed: 50 km/h
4-Wheel Drive
Fully Independent Suspension
Power Steering: Standard
Towing Capacity: 900 kg
Cargo Capacity: 454 kg

- Optional HVAC (heating and air conditioning)
- Road Homologation\*

\* Homologation type may vary by country.  
Please refer to your dealer.



# XUV865R

AS COMFORTABLE AS WORK GETS

The XUV865R is the most comfortable Gator™ in the John Deere family. It combines the remarkable performance of the XUV835M and XUV865M cross-over utility vehicles with a wide range of additional features for even more comfort – you might just keep on working.

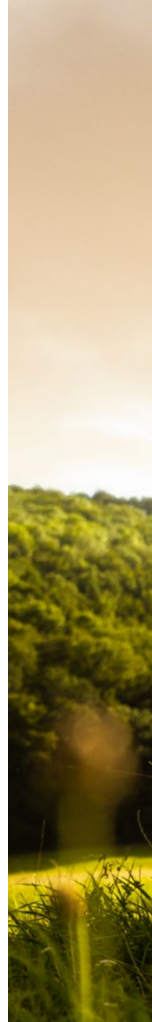
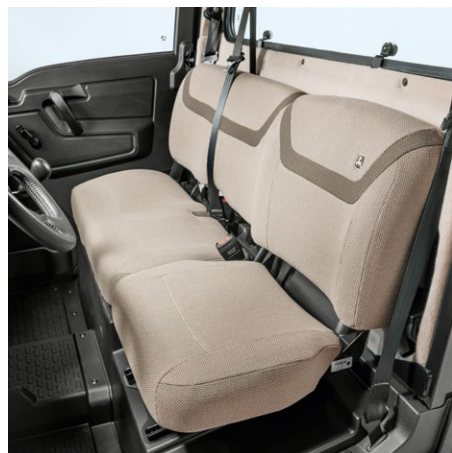


## WORK IN COMFORT

Standard features include car-style seating, easy-open door handles and a windscreen that opens fully; options include heating, ventilation and air conditioning (HVAC). The styled roof moves water to the outside edges, and front/rear lights are below the roof line for better protection.

## A FRESH LOOK

The R trim provides your cab with a wide array of extras, ranging from a stone interior to electrical wiring for attachments as well as heating, ventilation and air conditioning (HVAC). It also includes a stone cloth 40/60 bench seat, A and B post covers, a rear panel cover, an interior rearview mirror, high and low beam LED headlights, a dome light, sun visors, a windscreen wiper and washer.







## IDEAL WORKING CLIMATE

With four dash vents, four air flow modes and three fan speeds, the efficient heating, ventilation and air conditioning (HVAC) system helps you control your working temperature year-round. Easy to use automotive-style controls are conveniently located in the centre of the dash, within reach of the operator and passengers.



## XUV865R

Diesel Engine
Displacement: 854 cc
Speed: 50 km/h
4-Wheel Drive
Fully Independent Suspension
Power Steering: Standard
Towing Capacity: 900 kg
Cargo Capacity: 454 kg

- HVAC (heating and air conditioning)
- Road Homologation\*

\* Homologation type may vary by country.  
Please refer to your dealer.



# GATOR™ ATTACHMENTS





# T-SERIES



## CARGO BOX

### 1 Cargo Box Divider

The deluxe cargo box can be equipped with optional dividers, that can be positioned at the front or rear and released quickly without any tools (TE, TH).

### 2 Cargo Box Power Lift

Easily lower and raise the cargo box from the seat with the dash-mounted switch. Electro-mechanically activated, rated for full box capacity.

### 3 Cargo Box Side Extension

Cargo box side extensions let you haul twice the amount of light materials like clippings and mulch. Tailgate pivots at the top (similar to a dump truck) for ease of unloading loose material (TE, TH).

### 4 Cargo Box Tool Rack

The side tool rack enables you to maximise the use of the cargo box by carrying long-handled tools. The holders are adjustable, allowing you to carry a wide array of items in the racks (TE, TH).

### 5 Cargo Box Fender Guard

Easily installed heavy duty guard protects cargo box and won't interfere with dumping operation – with either gas-assisted dumping or power lift option (TE).

## ROAD HOMOLOGATION

### Public Roads

The use of Gators on public roads is subject to approval by national authorities. Please ask your dealer for details of our lighting kits, mirrors and other essentials.





## BUMPER

### 6 Front Bumper

Strong, front-mounted, modern bumper with brush guard creates a sleek, aggressive appearance for Gator™ T-Series models (not available for Gator™ TH 6x4).

### 7 Front Fender Guard

Durable tubing provides additional protection for the front grille, lights and fenders.

### 8 Rear Bumper

The rear bumper offers stylish, heavy duty rear protection to the vehicle.

### 9 Heavy Duty Brush Guard

Composed of strong tubular steel, the heavy duty bumper and brush guard protect the unit from front impacts – and add increased protection to the grille and headlights.

## FRONT RACK

### 10 Front Hood Rack

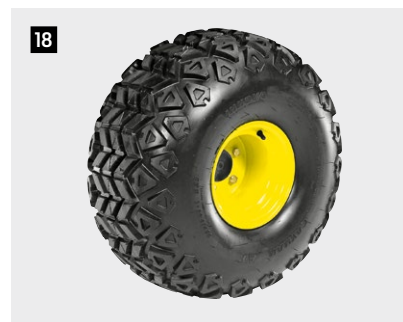
This generously sized rack will haul up to a 45 kg payload. Tilts forward, in conjunction with the brush guard, for full access to under-hood storage and service points.

## DRAWBAR

### 11 Drawbar Hitch

Can be mounted in the standard rear receiver hitch or the optional front receiver hitch for towing trailers.





## ROPS

### 12 T-Series ROPS

Add a spacious ROPS (Roll Over Protection Structure) – certified to your Gator™ T-Series UV for year-round protection. Optional front windscreen, glass doors and glass rear window available.

## LIGHTING

### 13 Brake and Tail Light Kit

Make your Gator™ more visible in all conditions by adding the brake and tail light kit.

## OPERATOR'S STATION

### 14 Windscreen

Easy to attach, height-adjustable tinted acrylic windscreen to protect the operator from dust and wind.

### 15 Floor Mat

Washable mat protects the floor and minimises dust, debris and noise in the operator station.

### 16 Seats

Ride in style and comfort with our high back or bucket seats. The choice is yours!

## Safety

Your safety is our top priority. That's why every Gator™ model has comfortable car-style 3-point seat belts as standard.

## TYRES

### 17 Turf

- Gentle to the turf
- Very good traction on damp surfaces
- High level of comfort
- Low wear on hard surfaces

### 18 Cayman AT (All Terrain)

- Universal all-round tyres for on- and off-road use
- Good traction off-road
- Low ground pressure (Fits TH 6x4)



# XUV835M, XUV855M S4, XUV865M, XUV865R & HPX815E



## AG MANAGEMENT SOLUTION

### AMS Integration kit

Mount a StarFire™ receiver and GS display (both sold separately) for even higher productivity.

## CARGO BOX

### 1 Cargo Box Side Extension

Haul twice the amount of clippings or mulch with these durable extensions. The tailgate pivots at the top for easier dumping (XUV835M, XUV855M S4, XUV865R). Mesh style side extensions available for HPX815E.

### 2 Cargo Box Divider

Make the most of your deluxe cargo box with these quick-release dividers. No tools required.

### 3 Cargo Box Tool Rack

Save valuable cargo space by attaching long tools to this adjustable rack (not available for HPX815E).

### 4 Cargo Box Power Lift

Easily lower and raise the cargo box from the seat with the dash-mounted switch. Electro-mechanically activated, rated for full box capacity (standard on XUV865R).





## LIGHTING

### 5 LED Driving Lights

State-of-the-art driving lights for safer operation all year round (not available for XUV855M S4).

### 6 LED Work Lights

Bolt these lights to the front of your cab frame for clear, consistent lighting (standard on XUV865R, not available for XUV855M S4).

### 7 Beacon Light

High-visibility rotary light with rugged amber lenses and an overhead-mounted on/off rocker switch.

Additional work lights are available for the XUV855M S4 – please ask your dealer.

## GUARDS

### Cargo Box Fender Guard

The cargo box fender guard offers enhanced styling in addition to heavy duty protection to the side of the cargo box (not available for HPX815E).

### 8 + 9 Heavy Duty Brush Guard

Strong bumper-mounted heavy duty brush guard provides a modern and aggressive appearance. Pictures display the extended version with additional side extensions (not included as standard).

### 10 Rear Panel Glass Protector

This durable screen protects your cab's rear window without impairing visibility (not available for XUV855M S4).

### 11 Rear Bumper

The rear bumper offers stylish, heavy duty rear protection to the vehicle (not available for HPX815E).

### 12 Rear Fender Guard

Heavy duty fender guards not only prevent damage from side impact but also create a modern and aggressive appearance (not available for XUV855M S4).





## OPERATOR'S STATION

### 13 Poly Doors for Deluxe Cab

Comes equipped with manual roll down window and numerous storage compartments (XUV855M S4 not pictured).

### 14 Floor Mat

Washable mat protects the floor and minimises dust, debris and noise in the operator station.

### 15 Cab Heater

Stay warm all year round. High-output two-speed heater also defrosts windscreen. Requires appropriate Heater Fitting Kit (XUV855M S4 only).

### 16 Sport Steering Wheel

Colour accents and a comfortable feel make this a must-have (standard on XUV865R, not available for XUV855M S4).

### 17 Rear Mirror

Add car-standard visibility to your Gator™ with this rugged foldable rear mirror (standard on XUV865R, not available for XUV855M S4).

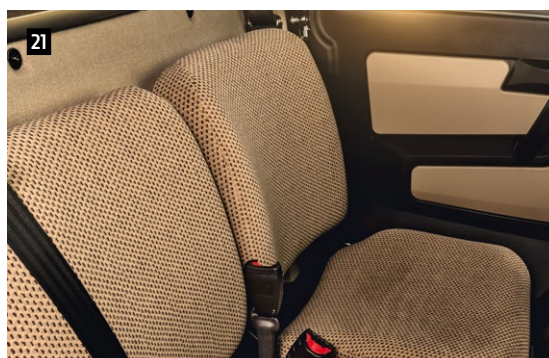
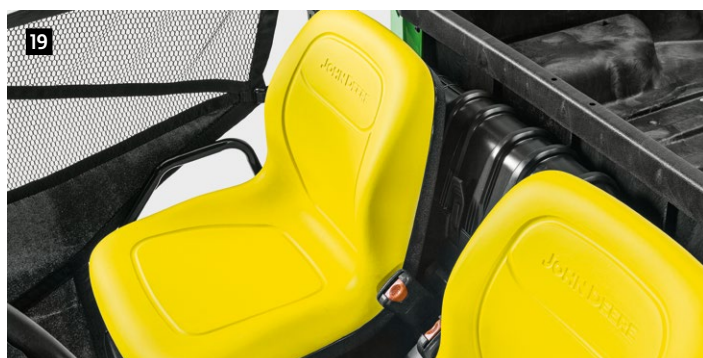
### Tablet Mount & Mobile Phone Holder

This rugged dash-mounted holder keeps devices safe when the going gets rough.

### Radios and Speakers

Our AM/FM receivers play CDs, are Bluetooth-enabled, and feature an aux input for carefree connectivity. Choose either Standard or Premium speakers to complete your system.





## Seats

Ride in style and comfort with our high back or bucket seats. The choice is yours!

## Safety

Your safety is our top priority. That's why every Gator™ Utility Vehicle has comfortable car-style 3-point seat belts as standard.

**18 Sport Seat**  
(XUV835M, XUV865M)

**19 High-Back Bucket Seats**  
(not available for XUV855M S4,  
XUV865R)

**20 Bench Seat "Yellow"**  
(XUV835M, XUV865M)

**21 Bench Seat "Tan"**  
(XUV865R)





## HITCHES

### 22 Drawbar / Ball Hitches

Can be mounted in the standard rear receiver hitch or the optional front receiver hitch for towing trailers.

## FRONT RACK

### 23 Front Hood Rack

Expand the work capabilities of your Gator™ Utility Vehicle with the addition of the front bonnet rack. The rack easily mounts to the required front brush guard. Next to the rack the picture shows the brush guard, brush guard extensions and front fender guards.

## WINCH

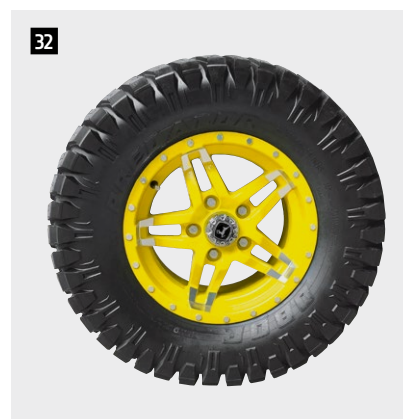
### 24 + 25 Winch

- For loads up to HPX815E: 1587 kg (3500 lbs), XUV835M, XUV865M and XUV865R: up to 2041 kg (4500 lbs) and XUV855M S4: up to 1587 kg (3500 lbs)
- Designed for moving logs, pulling out bushes with control or tension fences
- Increased efficiency and improved load distribution due to quiet, three-stage planetary gear design
- Mounts front and rear

### Wireless Winch Remote

For instant, push-button winch control from inside or outside the vehicle (XUV835M, XUV865M, XUV865R).





## TYRES

### 26 Turf

- Gentle to the turf
- Very good traction on damp surfaces
- High level of comfort
- Low wear on hard surfaces (Fits HPX815E)

### 27 Terra-Hawk AT (All Terrain)

- Universal all-round tyres for on and off-road use
- Good traction off-road
- Low ground pressure (Fits XUV835M, XUV865M, XUV865R)

### 28 Steel rims for Maxxis tyres

- Larger 14" diameter improves ride and performance
- Bigger holes for easier cleaning (Fits XUV835M, XUV865M, XUV865R)

### 29 Maxxis Bighorn 2.0 extreme terrain radial tyres

- Radial tyre construction provides better shock absorption
- Alloy rims for maximum performance and look
- Non-directional tread pattern provides predictable cornering and claws up roots and rocks
- 6-ply rating for maximum puncture resistance and lifetime (Fits XUV855M S4, XUV835M, XUV865M, XUV865R)

### 30 HPAP (High Performance All Purpose)

- Optimal traction
- Minimal impact on terrain (Fits HPX815E)

### 31 HPAT (High Performance All Terrain)

- Aggressive off-road tread pattern for extra traction (Fits HPX815E)

### 32 Predator Heavy-Duty all-terrain radial tires

- Suitable for hard surface applications (Fits XUV855M S4, XUV835M, XUV865M, XUV865R)



# ATTACHMENTS

FIND WHAT YOU'RE LOOKING FOR HERE

	TE	TH 6X4	HPX 815E	XUV 855M S4	XUV 835M	XUV 865M	XUV 865R
CABS / CANOPIES / OPS							
Deluxe Canopy (Includes Roof)	<input type="checkbox"/>	<input type="checkbox"/>	■		■	■	■
Standard OPS (Operator Protective Structure)				■			
Standard OPS Poly Roof				<input type="checkbox"/>			
Front Windshield / Windscreen	<input type="checkbox"/>	<input type="checkbox"/>	<input type="checkbox"/>	<input type="checkbox"/>	■	■	■
Rear Window / Screen Panel	<input type="checkbox"/>	<input type="checkbox"/>	<input type="checkbox"/>	<input type="checkbox"/>	■	■	■
Exterior Mirrors	<input type="checkbox"/>	<input type="checkbox"/>	■	■	■	■	■
Windscreen Washer Kit	<input type="checkbox"/>	<input type="checkbox"/>	<input type="checkbox"/>		■	■	■
Heater / Demister Kit		<input type="checkbox"/>	<input type="checkbox"/>	<input type="checkbox"/>	■	■	
Air Conditioning					<input type="checkbox"/>	<input type="checkbox"/>	■
Visor	<input type="checkbox"/>	<input type="checkbox"/>	<input type="checkbox"/>		<input type="checkbox"/>	<input type="checkbox"/>	■
Interior Light	<input type="checkbox"/>	<input type="checkbox"/>	<input type="checkbox"/>				■
DOORS							
Nets			■	■	■	■	
Half Doors				<input type="checkbox"/>	<input type="checkbox"/>	<input type="checkbox"/>	
Full Glass Doors	<input type="checkbox"/>	<input type="checkbox"/>	<input type="checkbox"/>				
Poly Cab Doors			<input type="checkbox"/>	<input type="checkbox"/>			
Deluxe Poly Doors			<input type="checkbox"/>	<input type="checkbox"/>	<input type="checkbox"/>	<input type="checkbox"/>	■
SEATS							
High-Back Bucket Seats	■	■	■		■	■	
Bench Passenger Seat					■	■	■
Sport Seat					<input type="checkbox"/>	<input type="checkbox"/>	
Adjustable Drivers Seat	<input type="checkbox"/>	<input type="checkbox"/>	■	■	■	■	■
HOMOLOGATION							
Road Homologation*	<input type="checkbox"/>	<input type="checkbox"/>	■	■	■	■	■
PROTECTION							
Front Bumper	<input type="checkbox"/>		■	■	<input type="checkbox"/>	<input type="checkbox"/>	<input type="checkbox"/>
Brush Guard	<input type="checkbox"/>	<input type="checkbox"/>	<input type="checkbox"/>	<input type="checkbox"/>	<input type="checkbox"/>	<input type="checkbox"/>	<input type="checkbox"/>
Fender Guard	<input type="checkbox"/>	<input type="checkbox"/>	<input type="checkbox"/>	<input type="checkbox"/>	<input type="checkbox"/>	<input type="checkbox"/>	<input type="checkbox"/>
CV Guards (Front and Rear)			<input type="checkbox"/>	<input type="checkbox"/>	<input type="checkbox"/>	<input type="checkbox"/>	<input type="checkbox"/>
Rear Bumper	<input type="checkbox"/>	■		■	<input type="checkbox"/>	<input type="checkbox"/>	<input type="checkbox"/>
Brake and Taillight Protector	<input type="checkbox"/>	<input type="checkbox"/>		<input type="checkbox"/>	<input type="checkbox"/>	<input type="checkbox"/>	<input type="checkbox"/>
Floor Mat	<input type="checkbox"/>	<input type="checkbox"/>	<input type="checkbox"/>	<input type="checkbox"/>	<input type="checkbox"/>	<input type="checkbox"/>	<input type="checkbox"/>
Front Hood Rack	<input type="checkbox"/>	<input type="checkbox"/>	<input type="checkbox"/>	<input type="checkbox"/>	<input type="checkbox"/>	<input type="checkbox"/>	<input type="checkbox"/>
HD Front Suspension	<input type="checkbox"/>	<input type="checkbox"/>	<input type="checkbox"/>	■	■	■	■

	TE	TH 6X4	HPX 815E	XUV 855M S4	XUV 835M	XUV 865M	XUV 865R
<b>LIGHTS</b>							
Beacon Light	<input type="checkbox"/>	<input type="checkbox"/>	<input type="checkbox"/>	<input type="checkbox"/>	<input type="checkbox"/>	<input type="checkbox"/>	<input type="checkbox"/>
Work Lights Front (2)	<input type="checkbox"/>	<input type="checkbox"/>	<input type="checkbox"/>		<input type="checkbox"/>	<input type="checkbox"/>	<input type="checkbox"/>
Work Light Rear (1)	<input type="checkbox"/>	<input type="checkbox"/>	<input type="checkbox"/>		<input type="checkbox"/>	<input type="checkbox"/>	<input type="checkbox"/>
LED Worklights fit Roof/OPS, Front/Rear				<input type="checkbox"/>	<input type="checkbox"/>	<input type="checkbox"/>	■
Deluxe Light Kit	<input type="checkbox"/>	<input type="checkbox"/>	<input type="checkbox"/>	<input type="checkbox"/>	<input type="checkbox"/>	<input type="checkbox"/>	<input type="checkbox"/>
Brake / Tail Light Kit	<input type="checkbox"/>	<input type="checkbox"/>	<input type="checkbox"/>	■	■	■	■
OPS Switch Bank				<input type="checkbox"/>			
<b>CARGO BOX</b>							
Cargo Box Lift Manual	■	■	■	■	■	■	
Cargo Box Power Lift	<input type="checkbox"/>	<input type="checkbox"/>	<input type="checkbox"/>	<input type="checkbox"/>	<input type="checkbox"/>	<input type="checkbox"/>	■
Cargo Box Side Wall Extension	<input type="checkbox"/>	<input type="checkbox"/>	<input type="checkbox"/>	<input type="checkbox"/>	<input type="checkbox"/>	<input type="checkbox"/>	<input type="checkbox"/>
Cargo Box Divider Kit	<input type="checkbox"/>	<input type="checkbox"/>	<input type="checkbox"/>	<input type="checkbox"/>	<input type="checkbox"/>	<input type="checkbox"/>	<input type="checkbox"/>
Cargo Box Tool Rack	<input type="checkbox"/>	<input type="checkbox"/>		<input type="checkbox"/>	<input type="checkbox"/>	<input type="checkbox"/>	<input type="checkbox"/>
Cargo Box Fender Guard	<input type="checkbox"/>			<input type="checkbox"/>	<input type="checkbox"/>	<input type="checkbox"/>	<input type="checkbox"/>
Cargo Box Bedliner			<input type="checkbox"/>				
Cargo Box Spray in Bedliner	■	■	■	■	■	■	■
Cargo Box Mat	<input type="checkbox"/>	<input type="checkbox"/>	<input type="checkbox"/>	<input type="checkbox"/>	<input type="checkbox"/>	<input type="checkbox"/>	<input type="checkbox"/>
Cargo Box Side Storage Box			<input type="checkbox"/>				
<b>HITCH</b>							
Rear Hitch	<input type="checkbox"/>	<input type="checkbox"/>	<input type="checkbox"/>	<input type="checkbox"/>	<input type="checkbox"/>	<input type="checkbox"/>	<input type="checkbox"/>
Ball Hitch	<input type="checkbox"/>	<input type="checkbox"/>	<input type="checkbox"/>	<input type="checkbox"/>	<input type="checkbox"/>	<input type="checkbox"/>	<input type="checkbox"/>
Rear Receiver	<input type="checkbox"/>	<input type="checkbox"/>	<input type="checkbox"/>	■	■	■	■
Drawbar	<input type="checkbox"/>	<input type="checkbox"/>	<input type="checkbox"/>	<input type="checkbox"/>	<input type="checkbox"/>	<input type="checkbox"/>	<input type="checkbox"/>
Front Receiver	<input type="checkbox"/>		■	■	■	■	■
<b>TYRES</b>							
Turf	<input type="checkbox"/>	<input type="checkbox"/>	<input type="checkbox"/>				
Cayman AT (All Terrain)		<input type="checkbox"/>					
Cayman KT (Knobby)		<input type="checkbox"/>					
HPAP (High Performance All Purpose)			<input type="checkbox"/>				
HPAT (Aggressive Tread)			<input type="checkbox"/>				
Terra-Hawk AT (All Terrain)					<input type="checkbox"/>	<input type="checkbox"/>	<input type="checkbox"/>
Maxxis Bighorn 2.0 extreme terrain radial tyres				<input type="checkbox"/>	<input type="checkbox"/>	<input type="checkbox"/>	<input type="checkbox"/>
Predator Heavy-Duty all-terrain radial tyres				<input type="checkbox"/>	<input type="checkbox"/>	<input type="checkbox"/>	<input type="checkbox"/>
Steel 14 rim Maxxis Big Horn Tyre					<input type="checkbox"/>	<input type="checkbox"/>	<input type="checkbox"/>
Camso Tracks**					<input type="checkbox"/>	<input type="checkbox"/>	<input type="checkbox"/>
<b>OTHER ACCESSORIES</b>							
Winch	<input type="checkbox"/>	<input type="checkbox"/>	<input type="checkbox"/>	<input type="checkbox"/>	<input type="checkbox"/>	<input type="checkbox"/>	<input type="checkbox"/>
Back-Up Alarm	■	<input type="checkbox"/>	<input type="checkbox"/>	<input type="checkbox"/>	<input type="checkbox"/>	<input type="checkbox"/>	<input type="checkbox"/>
Bucket Holder	<input type="checkbox"/>	<input type="checkbox"/>		<input type="checkbox"/>	<input type="checkbox"/>	<input type="checkbox"/>	<input type="checkbox"/>
High Capacity Alternator Kit (55 Amp)		<input type="checkbox"/>		■	■	■	■
Horn Kit	<input type="checkbox"/>	<input type="checkbox"/>	■	■	■	■	■
Seat Cover	<input type="checkbox"/>	<input type="checkbox"/>	<input type="checkbox"/>				

■ Standard

☐ Optional

\* Homologation type may vary by country. Please refer to your dealer. / \*\* Not available through Deere &amp; Company. Please contact your local dealer.



SPECIFICATIONS

TE		TH 6X4	
T-SERIES / WORK SERIES			
ENGINE			
Type	48 VDC Separately Exited, Electric	854 cc, 3-Cylinder, 4-Cycle, Diesel	
Power kW (hp) at min <sup>-1</sup>	48 V with 8 Trojan T-145 Batteries	13.6 (18.5) at 3400 ECE-R24	
Cooling System	NA	Liquid	
Fuel Tank, ltr	NA	18.9	
POWER STEERING		NA	
4-WHEEL DRIVE		Yes	
DRIVE SYSTEM			
Type	NA	CVT (Continuously Variable Transmission)	
Ground Speed, km/h*	0 – 24 Forward	0 – 32 Forward	
Differential Lock		Standard, Hand-Operated	
Brakes	Dual Rear Wheel Mechanical Drum	Wet Disc in Transaxle	
Suspension, Front	Independent Spring-Over-Shock, Single A-Arm	Independent Spring-Over-Shock, Single A-Arm	
Suspension, Rear	Two High-Flotation Tyres, Low Pressure Tyres (Solid Axle)	Two High-Flotation Tyres, Low Pressure Tyres (Solid Axle)	
Suspension Travel, mm	127 Front	127 Front	
DIMENSIONS			
Dimensions (W × L × H), mm	1525 × 2728 × 1130	1525 × 2754 × 1108	
Weight (Including Fluids), kg	667 w / Batteries	630	
Towing Capacity, kg	273	726	
Payload Capacity, kg	409	726	
GROUND CLEARANCE, mm	Under Foot Platform: 185	Under Transaxle: 165 Under Foot Platform: 216	
DELUXE CARGO BOX			
Type / Material	Deluxe (Polypropylene Side Panels and Tailgate; Steel Floor and Load Guard)	Deluxe (Polypropylene Side Panels and Tailgate; Steel Floor and Load Guard)	
Dimensions (L × W × D), mm	1143 × 1320 × 305	1143 × 1320 × 305	
Volume, ltr	460	460	
Capacity, kg	227	508	
TYRES			
Front	22 × 9.5 – 10, 4 PR Cayman Turf	22.5 × 10 – 8, 4 PR Cayman KT (Knobby) 22.5 × 10 – 8, 4 PR Cayman Turf 22.5 × 10 – 8, 4 PR Cayman AT (All Terrain)	
Rear	24 × 12 – 10, 4 PR Cayman Turf	25 × 12 – 9, 4 PR Cayman KT (Knobby) 25 × 12 – 9, 4 PR Cayman Turf 25 × 13 – 9, 4 PR Cayman AT (All Terrain)	
COLOURS	Green & Yellow	Green & Yellow	
SEATING CAPACITY	2	2	

\* Homologation type and speed may vary by country. Please refer to your dealer.

HPX815E	XUV855M S4	XUV835M
WORK SERIES	XUV-SERIES / CROSS-OVER SERIES	
854 cc, 3-Cylinder, 4-Cycle, Diesel	854 cc, 3-Cylinder Diesel	812 cc, 4-cycle gas, Electronic Fuel Injection (EFI)
13.6 (18.5) at 3400 ECE-R24	16.1 (21.9) at 3400 ECE-R24	39.3 (53.4) at 6000 ECE-R120
Liquid	Liquid	Liquid
20.1	27.6	42.8
NA	Standard	Standard
Yes	Yes	Yes
2-speed CVT (Continuously Variable Transmission)	2-speed CVT (Continuously Variable Transmission) with Enclosed Clutch & Engine Braking	2-speed CVT (Continuously Variable Transmission) with clutch enclosure, oil bath
0 – 40 Forward	0 – 51 Forward	0 – 60 Forward
Auto-Locking (Front) / Positive Locking, Mechanically Actuated-Hand-Operated (Rear)	Auto-Locking (Front) / Positive Locking, Mechanically Actuated – Hand-Operated (Rear)	Positive locking, mechanically actuated (hand-operated)
Front / Rear Hydraulic Disc	Front / Rear Hydraulic Disc	Front/rear hydraulic disc with twin piston front calipers
Independent with McPherson Strut	Fully Independent Dual A-Arm with Adjustable Coils	Fully independent dual A-Arm with adjustable coils
Coil-Over-Shock	Fully Independent Dual A-Arm with Adjustable Coils & Sway Bar	Fully independent dual A-Arm with adjustable coils and sway bar
131 Front & 90 Rear	203 Front & 229 Rear	200.7 Front & 231.14 Rear
1506 × 2743 × 1867	1571 × 3911 × 1903	1763 × 3228 × 1987
693	946	942 (open station) 1003 (cab)
590	680	900
635	635	680
165	Under Transaxle: 267 Under Foot Platform: 311	284
Deluxe (Polypropylene Side Panels and Tailgate; Steel Floor and Load Guard)	Deluxe (Polypropylene Side Panels and Tailgate; Steel Floor and Load Guard)	Deluxe (Polypropylene Side Panels and Tailgate; Steel Floor and Load Guard)
1143 × 1320 × 305	1143 × 1320 × 305	1143 × 1320 × 304.8
320	460	460
454	454	454
24 × 9.5 – 10, 4 PR High Performance All Purpose (HPAP) 24 × 9.5 – 10, 4 PR High Performance All Terrain (HPAT) 24 × 9.5 – 10, 4 PR Turf	27 × 9.00 – 14, 6 PR Big Horn Maxxis XT	25 × 9 – 12 Terrahawk AT (All Terrain) 27 × 9 – R14 Maxxis Big Horn Radials (Extreme Terrain)
24 × 10.5 – 10, 4 PR High Performance All Purpose (HPAP) 24 × 12 – 10, 4 PR High Performance All Terrain (HPAT) 24 × 12 – 10, 4 PR Turf	27 × 11.00 – 14, 6PR Big Horn Maxxis XT	25 × 11 – 12 Terrahawk AT (all terrain) 27 × 11 – R14 Maxxis Big Horn Radials (Extreme Terrain)
Green & Yellow	Olive & Black	Green & Yellow, Camouflage, Olive & Black
2	4	3 (offroad only, 2 seats onroad)



SPECIFICATIONS

XUV865M		XUV865R
ENGINE		
Type	854 cc, 4-cycle diesel	854 cc, 4-cycle diesel
Power kW (hp) at min <sup>-1</sup>	15.5 (22.8) at 3600 ECER-120	15.5 (22.8) at 3600 ECER-120
Cooling System	Liquid	Liquid
Fuel Tank, ltr	42.8	42.8
POWER STEERING	Standard	Standard
4-WHEEL DRIVE	Yes	Yes
DRIVE SYSTEM		
Type	2-speed CVT (Continuously Variable Transmission) with clutch enclosure, oil bath	2-speed CVT (Continuously Variable Transmission) with clutch enclosure, oil bath
Ground Speed, km/h*	0 – 50 Forward	0 – 50 Forward
Differential Lock	Positive locking, mechanically actuated (hand-operated)	Positive locking, mechanically actuated (hand-operated)
Brakes	Front/rear hydraulic disc with twin piston front calipers	Front/rear hydraulic disc with twin piston front calipers
Suspension, Front	Fully independent dual A-Arm with adjustable coils	Fully independent dual A-Arm with adjustable coils
Suspension, Rear	Fully independent dual A-Arm with adjustable coils and sway bar	Fully independent dual A-Arm with adjustable coils and sway bar
Suspension Travel, mm	200.7 Front & 231.14 Rear	200.7 Front & 231.14 Rear
DIMENSIONS		
Dimensions (W × L × H), mm	1763 × 3228 × 1987	1763 × 3228 × 1987
Weight (Including Fluids), kg	949 (open station) 1011 (cab)	949 (open station) 1011 (cab)
Towing Capacity, kg	900	900
Payload Capacity, kg	680	680
GROUND CLEARANCE	284	284
DELUXE CARGO BOX		
Type / Material	Deluxe (Polypropylene Side Panels and Tailgate; Steel Floor and Load Guard)	Deluxe (Polypropylene Side Panels and Tailgate; Steel Floor and Load Guard)
Dimensions (L × W × D), mm	1143 × 1320 × 304.8	1143 × 1320 × 304.8
Volume, ltr	460	460
Capacity, kg	454	454
TYRES		
Front	25 × 9 – 12 Terrahawk AT (All Terrain) 27 × 9 – R14 Maxxis Big Horn Radials (Extreme Terrain)	25 × 9 – 12 Terrahawk AT (All Terrain) 27 × 9 – R14 Maxxis Big Horn Radials (Extreme Terrain)
Rear	25 × 11 – 12 Terrahawk AT (all terrain) 27 × 11 – R14 Maxxis Big Horn Radials (Extreme Terrain)	25 × 11 – 12 Terrahawk AT (all terrain) 27 × 11 – R14 Maxxis Big Horn Radials (Extreme Terrain)
COLOURS	Green & Yellow, Camouflage, Olive & Black	Green & Yellow
SEATING CAPACITY	3 (offroad only, 2 seats onroad)	3 (offroad only, 2 seats onroad)

\* Homologation type and speed may vary by country. Please refer to your dealer.





# RIDE IN STYLE WITH JOHN DEERE MERCHANDISE

FROM STYLISH WORKWEAR AND PRACTICAL ACCESSORIES TO GIFTS AND TOYS, YOUR DEALER HAS A WIDE RANGE OF JOHN DEERE MERCHANDISE WAITING FOR YOU IN STORE. DROP BY SOON!



This literature has been compiled for worldwide circulation. While general information, pictures and descriptions are provided, some illustrations and text may include finance, credit, insurance, product options and accessories not available in all regions. Please contact your local dealer for details. John Deere reserves the right to change specification and design of products described in this literature without notice. The green and yellow colour scheme, the leaping deer logo and the JOHN DEERE word mark are trademarks of Deere & Company.